



Serving our clients with integrity and excellence since 1978!

Survey Services

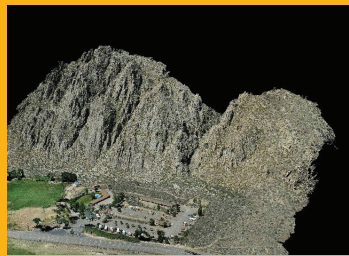
Our team of Nevada and California licensed surveyors ensures accurate and reliable field data and base mapping that meets all budgetary and scheduling requirements. Our survey services include construction and right-of-way staking, Tahoe Regional Planning Agency (TRPA) coverage mapping, boundary, topographic, and American Land Title Association (ALTA) surveys. RCI offers a wide array of services that utilize the latest available technology, including Trimble Robotic Total Stations, Trimble Global Positioning System (GPS) field equipment and Unmanned Aerial Systems (UAS).

RCI's team of FAA Part 107 Remote Pilots currently utilize the DJI Phantom 4 Pro, Phantom 4 RTK, and Wingtra One GenII Unmanned Aerial Systems (UAS) to enhance the capability and efficiency of our surveying services. Utilizing the UAS technology and mapping software, larger areas can be surveyed more efficiently than by conventional methods. These systems also allow for photographing and mapping areas inaccessible to traditional surveying techniques and areas where traditional survey crews could not safely operate. In addition to increasing efficiencies, the UAS provides high-resolution aerial photographs that aid the client and design team in planning, decision-making, and documentation of site conditions. Deliverables, which can include oblique images and 3D models are well-suited as presentation material for a wide variety of audiences.

RCI has a specially outfitted kayak for highly accurate bathymetric measurements of reservoirs and waterways, to include the Lake Tahoe lakebed. As part of our professional land surveying services, we are frequently asked by our clients to perform bathymetric surveys in conjunction with pier and buoy permits within state lands on both sides of the Nevada and California border.

SERVICES SUMMARY

- Topographic
- Aerial
- Boundary
- Control
- Bathymetric
- ALTA
- Boundary Line Adjustments
- Parcel Maps
- Subdivision Maps
- TRPA Land Coverage
- Flood Certificates
- Grading & Drainage Certificates
- Setbacks Certificates



Main Office
340 North Minnesota St.
Carson City, NV 89703

www.rci-nv.com
(775) 883-1600

Lake Tahoe Office
276 Kingsbury Grade, Suite 206
PO Box 11796, Zephyr Cove, NV 89448